

## Shelter Plan

In the occurrence of a weather event that produces lightning, thunder, high winds or a tornado, the decision to activate the Shelter Plan will take place through Forward Command. It is imperative that all who are associated with the event are familiar with the shelters and their locations along or near the event. When the decision is made to activate the shelter plan the following should take place:

- Communications will come from Command Staff regarding the activation of the Shelter Plan. The Incident Commander will notify the Event Director and officers stationed throughout the event. The Event Director will notify their respective parties via radio and/or cell phone to begin notifying participants and spectators that the event has been postponed and that they need to seek immediate shelter. A public address system and volunteers will be used to notify spectators, participants, and vendors.

## The following shelters will be used in the event of Hazardous Weather that produces lightning, thunder, high winds, or a tornado:

<b>Designated Shelters in the Event of Hazardous Weather that Produces Lightning, High winds, or a Tornado:</b>	
<b>CarmelFest Festival and Fireworks Weather Shelters</b>	
1)	Center for Performing Arts Garage - 3rd Ave SW. south of Palladium 24 hr. Access
2)	Veteran's Way Parking Garage - 100 City Center Dr. (City Center Dr. / Rangeline Rd.) 24 hr. Access
3)	Carmel Fire Department - 2 Civic Square 24 hr. Access
4)	City Hall - 1 Civic Square 24 hr. Access
5)	Carmel Police Department - 3 Civic Square 24 hr. Access
6)	City Center Parking Garage - 100 City Center Dr.
<b>CarmelFest Parade Weather Shelters</b>	
1)	Carmel Lions Club - 141 E. Main St. Open 30 mins. Prior To Start Until Conclusion
2)	Veteran's Way Parking Garage - 100 City Center Dr. (City Center Dr. / Rangeline Rd.) 24 hr. Access
3)	Carmel Fire Department - 2 Civic Square 24 hr. Access
4)	City Hall - 1 Civic Square 24 hr. Access
5)	Carmel Police Department - 3 Civic Square 24 hr. Access
6)	Indiana Design Center Garage - 100 S. Rangeline Rd. (Rangeline Rd. S. of Main) 24 hr. Access
7)	Sophia Square Parking Garage - 1st Ave. NW Old Downtown Area 24 hr. Access
8)	Carmel High School - 520 E. Main St. Access Door #9 With Key...Shelter In Community Room
9)	Circle K Gas Station - 1230 S. Rangeline Rd. (Rangeline Rd. / Carmel Dr.) 24 hr. Access
10)	Circle K Gas Station - 545 S. Rangeline Rd. 24 hr. Access
11)	MCL - 1390 Keystone Way Open 7am Until Conclusion Of Parade
12)	Kroger - 1217 S. Rangeline Rd. Open During Parade Hours
13)	Carmel Library - 55 4th Ave. SE. Access By Fire Dept. With Knox Box During Parade Hours

## **Resuming the Event**

The Command Staff will continue to monitor the proximity of thunderstorms and use the Flash/Bang Method to make an informed decision, determining the appropriate time to resume the event. The Incident Commander in conjunction with the Executive Event Director may then allow for activities to resume after 30 minutes of no detected lightning strikes within a 10-mile radius of the event. The ultimate decision to resume the event resides with the Incident Commander.

Upon the decision to resume the event, the Executive Event Director with the assistance of his designated volunteers will implement a plan to inform participants and others who have taken up shelter in designated Hazardous Weather shelters that the event will continue.

## **High Wind Plan**

In the event of a short duration or prolonged wind event, Command Staff will utilize the Beaufort scale to predict/measure potential damage due to a wind event. The Beaufort scale designates effects, description of the wind, and a range of wind speed which will help identify critical sites which could pose a threat to overall safety.

There are temporary tent structures erected for use during the CarmelFest. High winds can have an effect on temporary tent structures at any time. The plan, as outlined in this document, will provide key agencies informational trigger points with regard to high wind activity that may occur during the event. The following triggers and action items will help with the decision-making in the event of high winds:

### **Definition of High Wind**

Due to the structural engineering of the temporary structures, the definition of high wind for this plan is any wind which has a sustained wind speed and / or gusts of 40 MPH.

### **Definition of Sustained Winds**

Wind speed determined by averaging observed values over a 2-minute period.

## Definition of Wind Gust

Wind Gust Is a sudden, brief increase in speed of wind. According to U.S. weather observing practice, gusts are reported when the peak wind speed reaches at least 16 knots and the variation in wind speed between the peaks and lulls is at least 9 knots. The duration of a gust is usually less than 20 seconds.

## Wind Speed Indicators

***ALL INQUIRES ON WIND SPEED SHOULD BE DIRECTED TO THE INCIDENT COMMANDER.***

## Closure of Tents

At any time if sustained wind speeds and / or gusts reach **40 MPH**, or when it is determined by a Lead Public Safety Official that winds dictate the life safety of First Responders and Visitors may be in jeopardy, Public Safety Officials may order an immediate closure of a tent. Ensuring communication between the Lead Public Safety Official on scene and the Public Safety Command is of paramount importance. Notification must be made through the proper channels making sure all key agencies receive notification.

If a closure is ordered, the following agencies must receive notification via Radio / Phone regarding the evacuation:

- a. Public Safety Command
- b. Carmel Police Department
- c. Carmel Fire Department
- d. Executive Event Director

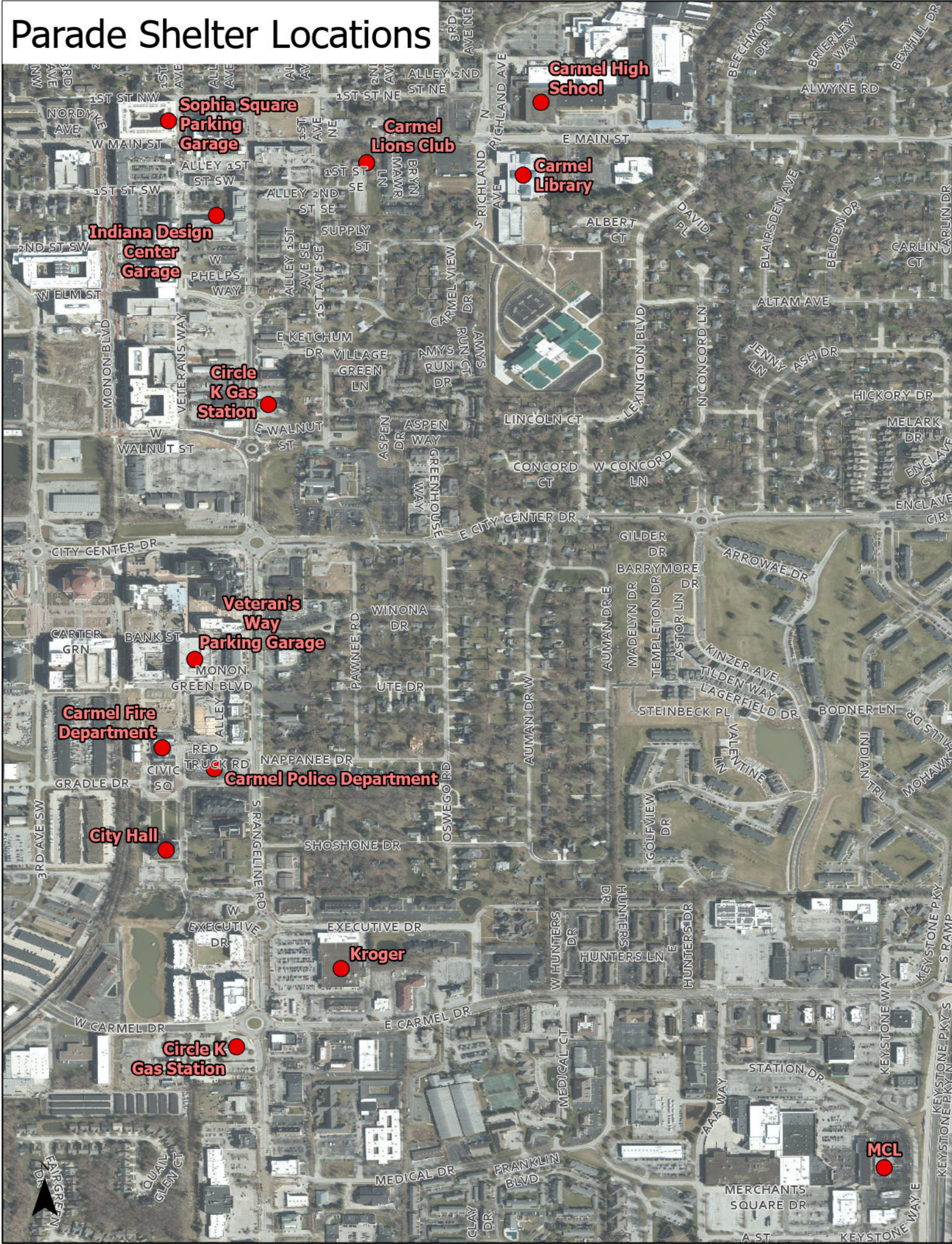
## Repopulation of Temporary Structures

Due to the potential life hazards of the temporary structures, the following agencies must meet and consult with key subject matter experts before a temporary structure is re-opened to the public after an evacuation.

1. Public Safety Command
2. Carmel Police Department
3. Carmel Fire Department
4. Executive Event Director



# Parade Shelter Locations





# Carmelfest and Fireworks Shelter Locations

